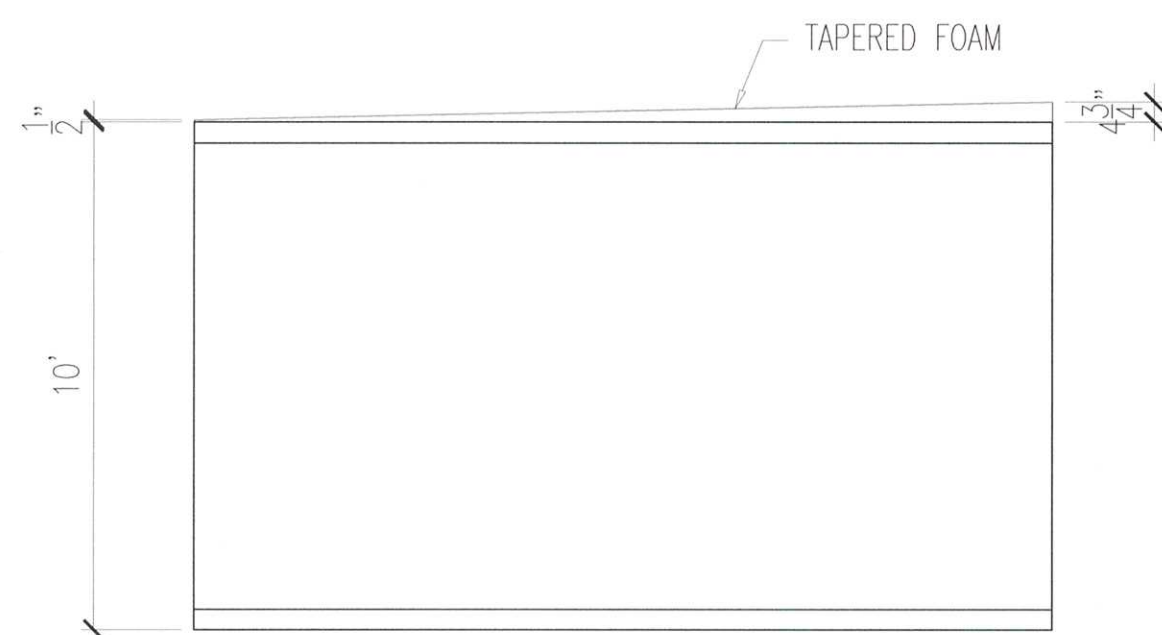
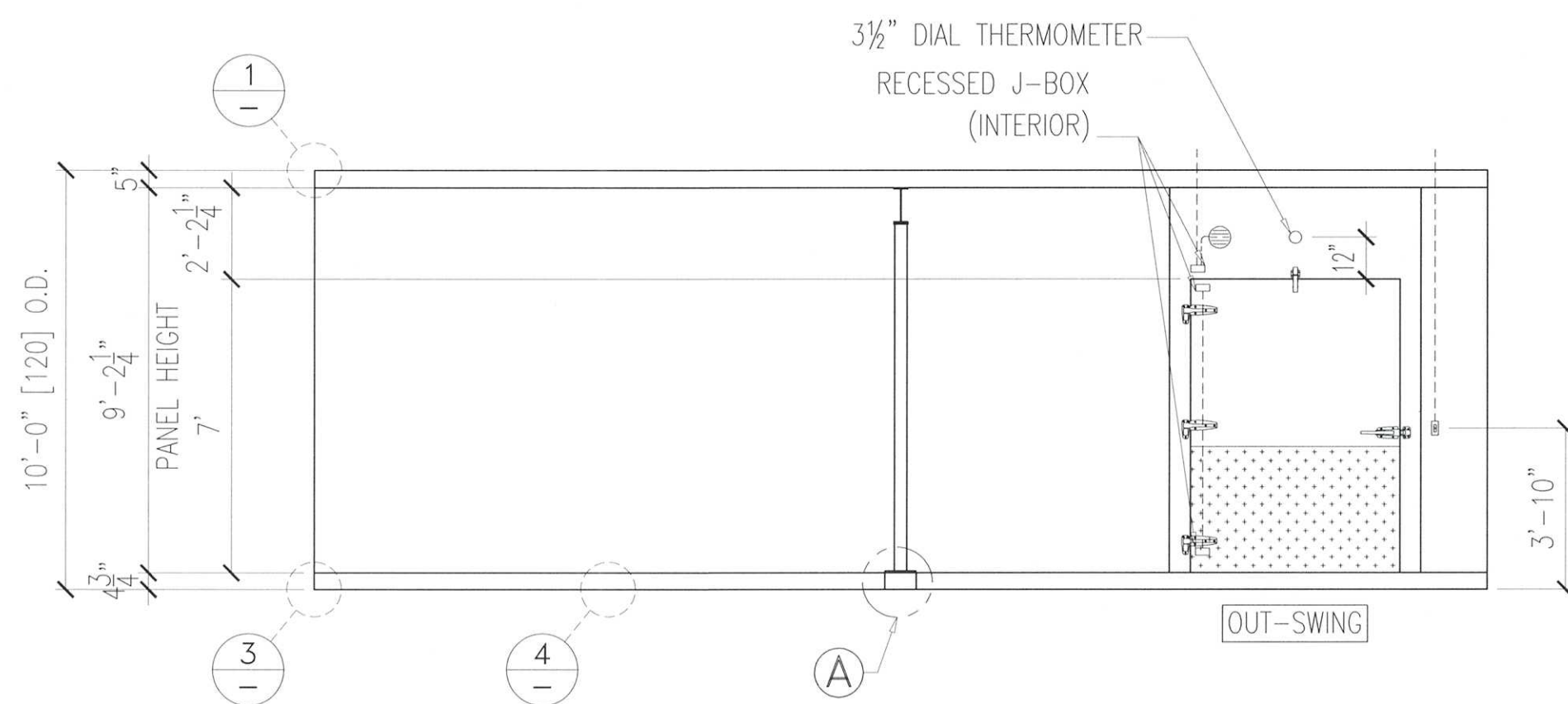


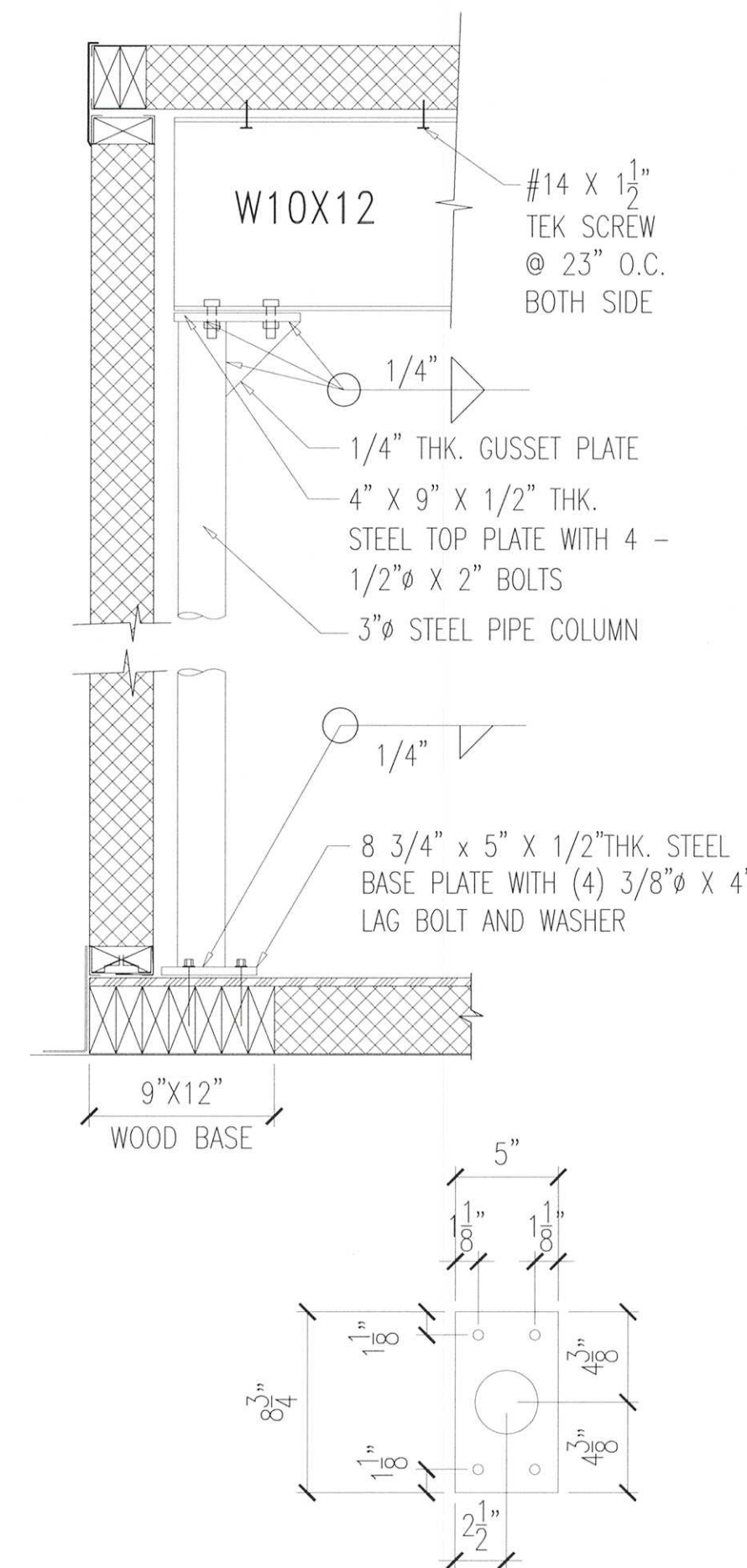
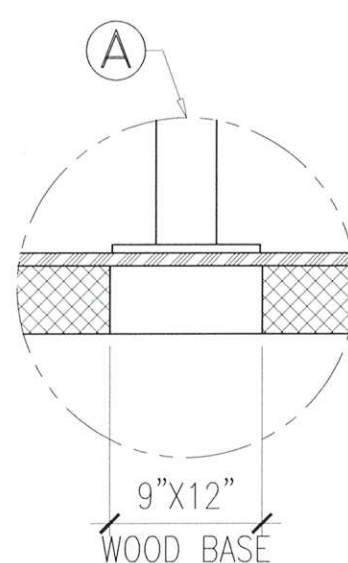
PLAN VIEW



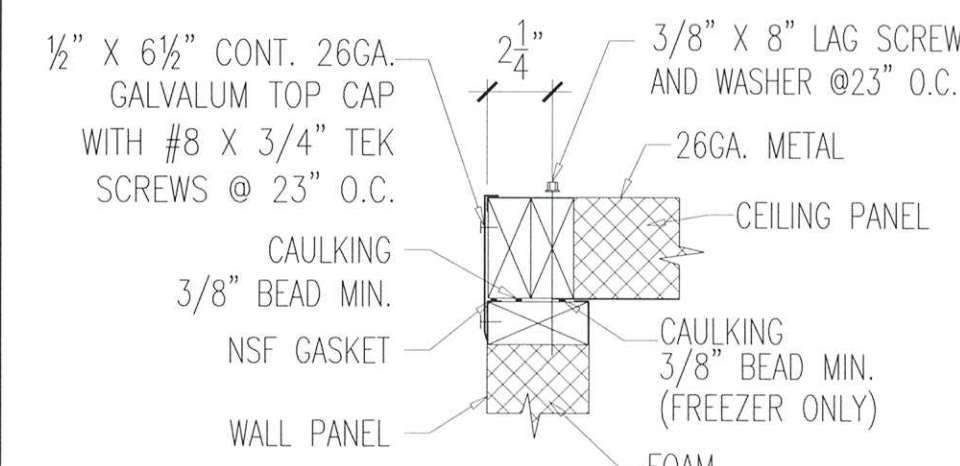
LEFT ELEVATION



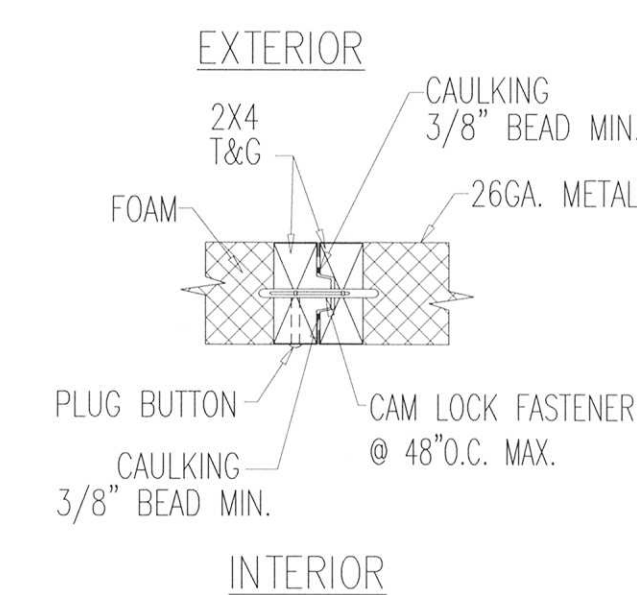
FRONT ELEVATION



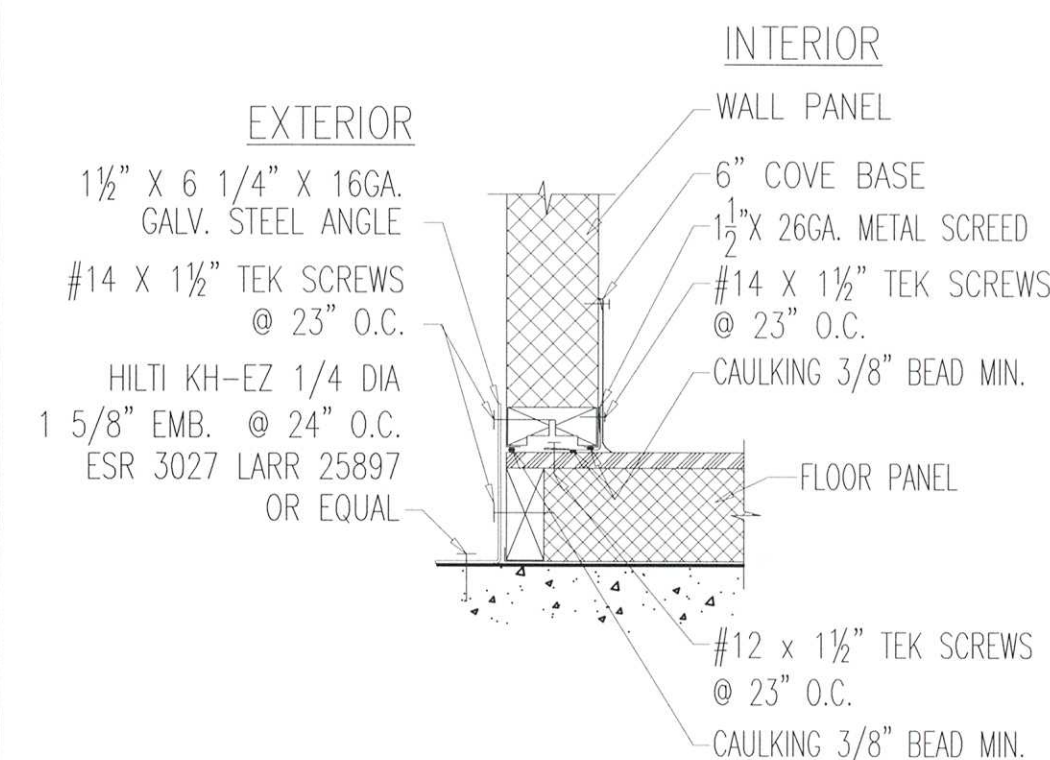
5 STEEL BEAM TO POST



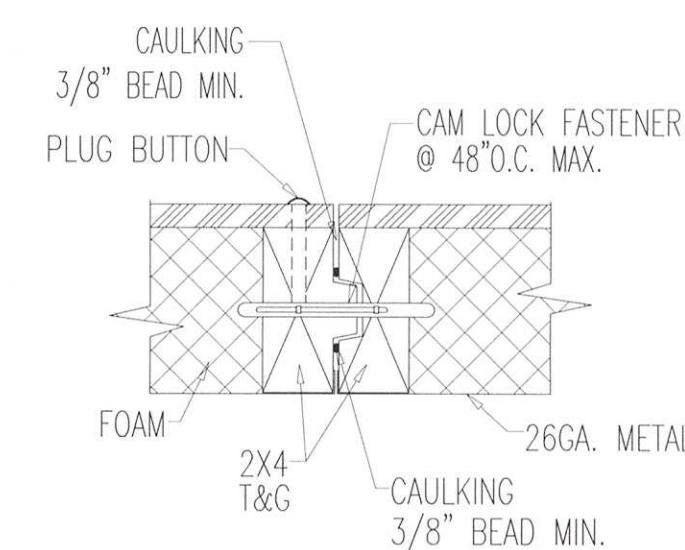
1 CEILING TO WALL



2 PANEL TO PANEL (FREEZER)



3 WALL TO PRE-FAB FLOOR



4 FLOOR TO FLOOR

7 NOT USED

6 NOT USED

SPECIFICATIONS

CONSTRUCTION:
WALL: 5" WOOD-FRAME, T&G, POLYURETHANE, F-I-P (R-41)
CEILING: 5" WOOD-FRAME, T&G, POLYURETHANE, F-I-P (R-41)
FLOOR: 4" WOOD-FRAME, T&G, POLYURETHANE, F-I-P (R-33)
ONE (1) LAYER OF 3/4" PLYWOOD (BUILT-IN) ON TOP

FINISH:
WALL: 26GA. STUCCO-WHITE INTERIOR
26GA. STUCCO-WHITE EXTERIOR
CEILING: 26GA. STUCCO-WHITE INTERIOR
26GA. STUCCO-GALVALUM EXTERIOR
FLOOR: 3/4" PLYWOOD INTERIOR
.188" DT/ALUM. INTERIOR - SHIP LOOSE
26GA. STUCCO-GALVALUM EXTERIOR

ACCESSORIES:
1 EA. - 60" X 84" HINGED HYBRID FREEZER DOOR
SELF CLOSING
HEATED FRAME, BELLY HEATER & HEATED SWEEP
12GA. SST. JAMB (MAGNETIC)
36"H .100 DT/ALUM. KICKPLATE INT. & EXT.
K-382 DOOR PULL HANDLE - INTERIOR
1 EA. - 3 1/2" DIAL THERMOMETER WITH 1' PROBE
1 EA. - LIGHT SWITCH W/ PILOT LIGHT
1 EA. - HEATED AIR VENT #1832
1 LOT - DUROLAST ROOF MATERIAL OVER TAPERED FOAM
1 LOT - STRUCTURAL STEEL SUPPORT (PAINTED WHITE)
1 EA. - 60" X 84" (6" STRIPS) PLASTIC CURTAIN

NOTES:
LAG DOWN CEILING
THE CEILING IS DESIGNED FOR "NO STORAGE"
FLOOR ANGLE - EXTERIOR

SECTION 2603.4.1.2 COMPLIANCE DATA
COMPOSITE PANEL- SURFACE BURNING CHARACTERISTICS:
FLAME SPREAD: 20
SMOKE DEVELOPED: 250-400
CORE FLASH IGNITION TEMPERATURE: 599°F
CORE SELF-IGNITION TEMPERATURE: 914°F
VALUES ARE REPORTED BY UNDERWRITERS LABORATORIES FILE NO. 25285 AND SV16788
SPRINKLER SYSTEMS ARE UNDER SEPARATE PERMIT

SUBMITTAL DRAWING
MUST BE SIGNED & RETURNED BY _____
TO BE SHIPPED ON _____

☐ NOT APPROVED - REVISE AND RESUBMIT
☐ APPROVED AS NOTED - MANUFACTURE AS NOTED
☒ APPROVED AS IS - MANUFACTURE AS DRAWN

DELIVERY DATE: _____
DATE 11/10/19 SIGN *Chae M. Lee*

REV.	DATE	DESCRIPTION	REV. BY

Custom Cooler
430 E. ARROW HIGHWAY
SAN DIMAS, CA 91773
TEL: (909) 592-1111
FAX: (909) 599-6225

1005 SIGMAN ROAD NE
CONYERS, GA. 30013
TEL: (678) 712-5656

JOB: FOOD LION 2250 1555 E. UNION BLVD MONGANTON, NC		CUSTOMER: FOOD LION	
DRAWN BY: BAU		DRAWING NO.: 19-7266-1	
DATE: 11/04/19		SCALE: 1/4"=1'-0"	
OUTDOOR FREEZER		SHEET 1 OF 1	

CUSTOM COOLER PRODUCTS COMPLY WITH THE "R" VALUE REQUIREMENTS OF SECTION 340 OF THE ENERGY POLICY AND CONSERVATION ACT (42 U.S.C. 6311) AND CALIFORNIA TITLE 20 AND TITLE 24.